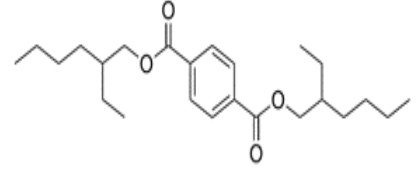


**MELFLEX® D.O.T.P-H**  
(Bis (2-ethylhexyl) Terephthalate)

**CAS NUMBER:** 6422-86-2  
**EINECS NUMBER:** 229-176-9  
**REACH REF. NUMBER:** 01-2119446265-39-0007  
**MOLECULAR FORMULA:** C<sub>24</sub>H<sub>38</sub>O<sub>4</sub>  
**MOLECULAR WEIGHT:** 390.57 g/mol



PARAMETERS	VALUE	METHODS
ESTER %	≥ 99,5	ASTM D3465
REFRACTIVE INDEX n <sub>20D</sub> (20°C)	1,4925±0,005	ASTM D1045-08(D1218)
SPECIFIC GRAVITY 20/20°C (g/cm <sup>3</sup> )	0,999±0,02	ASTM D1045-08(D287-D4052)
VISCOSITY (cp) 20°C	115 ± 30	BROOKFIELD METOD
ACIDITY( as mgKOH/g ) (%)	2,0 Max.	ASTM D1045-08
WATER CONTENT (Karl Fischer) %	0,01 Max.	ASTM D1045-08(E203)
OPEN CUP FLASH POINT(COC),°C	≥ 205	ASTM D-92
APPEARANCE	Clear and Light Amber	VISUAL EXAMINATION

**Applications:**

Films, sheets, table cloths, conveyor belts, artificial leathers, Wall coverings, strips, profiles, shingles, wires, cables, shoesoles, sealants, shades