

# Technical Data Sheet

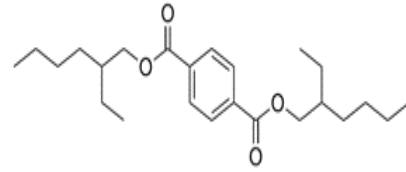
MAY 2017, REV:02

®

## MELFLEX DOTP

(Bis (2-ethylhexyl) Terephthalate)

CAS NUMBER: 6422-86-2  
EINECS NUMBER: 229-176-9  
REACH REF. NUMBER: 01-2119446265-39-0007  
MOLECULAR FORMULA: C<sub>24</sub>H<sub>38</sub>O<sub>4</sub>  
MOLECULAR WEIGHT: 390.57



PARAMETERS	VALUE	METHODS
ESTER %	> 99,0	ASTM D3465
REFRACTIVE INDEX n <sub>20D</sub> (20°C)	1,4865-1,4895	ASTM D1045-08(D1218)
SPECIFIC GRAVITY 20/20°C (g/cm <sup>3</sup> )	0,980-0,989	ASTM D1045-08(D287-D4052)
VISCOSITY (cP) 20°C	80-100	BROOKFIELD METOD
ACIDITY( as mgKOH/g ) (%)	0,10 Max.	ASTM D1045-08
WATER CONTENT (Karl Fischer) %	0,1 Max.	ASTM D1045-08(E203)
OPEN CUP FLASH POINT(COC), °C	> 195	ASTM D-92
VOLALITE SUBSTANCE (3 hours at 125°C) %	0,5 Max.	ILL 003/1-04-48
COLOR (Pt-CoScale) (Hazen)	25 Max.	ASTM D1045-08 (D1209)

### Applications:

Films, sheets, tablecloths, conveyorbelt, artificialleathers, wallcoverings, strips, profiles, shingles, wires, cables, shoesoles, sealants, shades



PET Resin, Plasticers & PVC FloorCover

**Address:** Batı Otopan Bağlantı Yolu Üzeri Büyük Dikili Mah.93099 Sok.No: 4/A Seyhan/ADANA/TURKEY  
**Tel: +90-322 485 62 67 Fax: +90-322 485 62 03**

# Technical Data Sheet

MAY 2017, REV:02

[www.meltemkimya.com.tr](http://www.meltemkimya.com.tr)

Operating With: ISO 9001-2000, ISO 14001, OHSAS 18001-2004, TSE