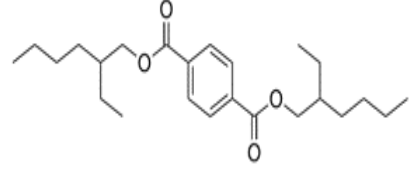


MELFLEX® D.O.T.P
(Bis (2-ethylhexyl) Terephthalate)

CAS NUMBER: 6422-86-2
EINECS NUMBER: 229-176-9
REACH REF. NUMBER: 01-2119446265-39-0007
MOLECULAR FORMULA: C₂₄H₃₈O₄
MOLECULAR WEIGHT: 390.57 g/mol



PARAMETERS	VALUE	METHODS
ESTER %	≥ 99,8	ASTM D3465
REFRACTIVE INDEX n _{20D} (20°C)	1,4895±0,003	ASTM D1045-08(D1218)
SPECIFIC GRAVITY 20/20°C (g/cm ³)	0,982 ±0,003	ASTM D1045-08(D287-D4052)
VISCOSITY (cP) 20°C	85 ± 10	BROOKFIELD METOD
ACIDITY(as mgKOH/g) (%)	0,10 Max.	ASTM D1045-08
WATER CONTENT (Karl Fischer) %	0,01 Max.	ASTM D1045-08(E203)
OPEN CUP FLASH POINT(COC),°C	> 200	ASTM D-92
COLOR (Pt-CoScale) (Hazen)	30 Max.	ASTM D1045-08 (D1209)

Applications:

Films, sheets, tablecloths, conveyorbelts, artificialleathers, wallcoverings, strips, profiles, shingles, wires, cables, shoesoles, sealants, shades